

## INSTRUCTIONS

# Gelish Color Application



### Step 1

Sanitize the nail and your clients hands.

### Step 2

Clean the surrounding nail plate.

### Step 3

Shape the natural nail using your Hand & Nail Harmony file of choice (Recommended: Hand & Nail Harmony Wooden File).

### Step 4

Gently remove the shine using the Hand & Nail Harmony 100/180 Buffer.

### Step 5

Remove the dust using **NAIL SURFACE CLEANSE** and **WIPE IT OFF** lint-free wipes.

### Step 6

Apply a thin coat of **PH BOND** Nail Prep to the nail plate.

### Step 7

Apply a thin coat of **FOUNDATION** Base Gel making sure to cap the free edges.

### Step 8

Place hand in the **18G LED LIGHT** for 5 seconds or UV Light for 1 minute.

### Step 9

Apply a thin coat of **GELISH SOAK-OFF POLISH** of choice to the entire nail making sure to cap the free edge. Cure for 30 seconds in the 18G LED Light or 2 minutes in UV Light. Repeat for full coverage.

### Step 10

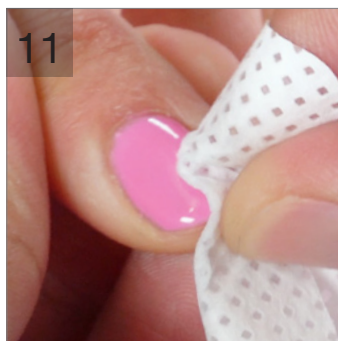
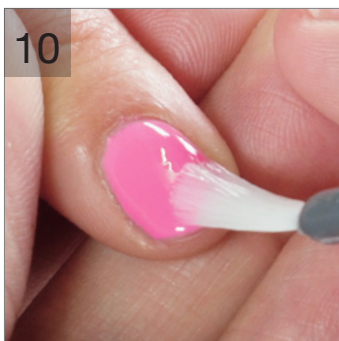
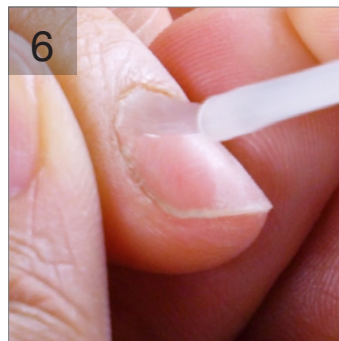
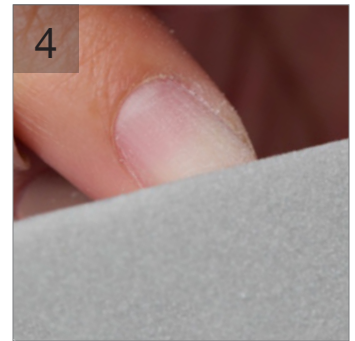
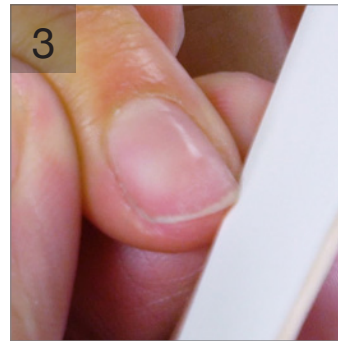
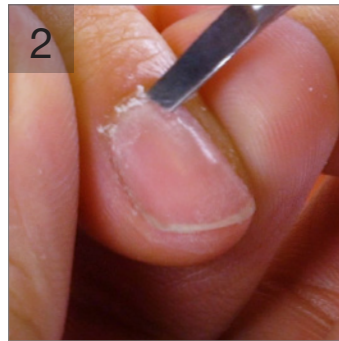
Apply a thin coat of **TOP IT OFF** Sealer Gel to the entire nail making sure to cap the free edge. Cure for 30 seconds in the 18G LED Light or 2 minutes in the UV Light.

### Step 11

Remove the inhibition layer with Nail Surface Cleanse and Wipe It Off lint-free wipes.

### Step 12

Massage **NOURISH** Cuticle Oil into skin surrounding the nail plate and enjoy your finished look.



## INSTRUCTIONS

# Gelish Soak-Off Gel Polish - Removal

### Step 1

Break top seal by gently roughing the surface with **100/180 GRIT BUFFER** and remove shine.

### Step 2

Saturate a cotton pad or **WRAP IT OFF** foil wrap with **ARTIFICIAL NAIL REMOVER**. Place onto nail and soak for 15 minutes.

### Step 3

Remove foil. With an orangewood stick, gently remove any remaining gel. Be careful not to press into the nail.

### Step 4

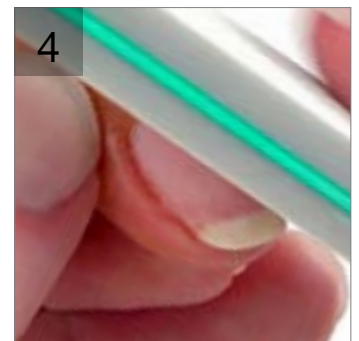
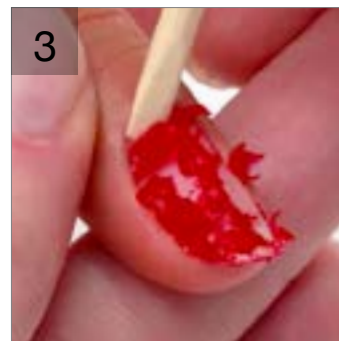
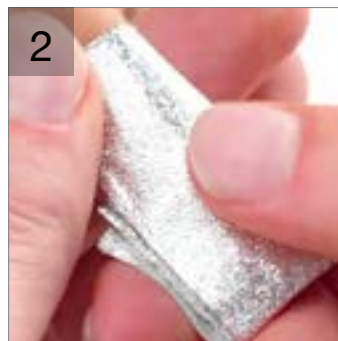
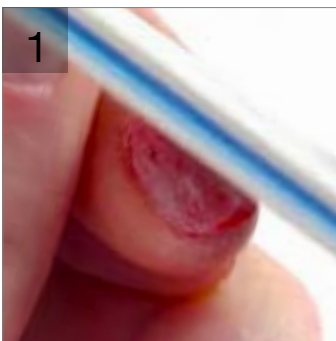
Lightly buff nail surface with a **200/280 BUFFER**. Massage **NOURISH** Cuticle Oil into skin surrounding the nail plate.



100/180  
BUFFER

ARTIFICIAL NAIL  
REMOVER

200/280  
BUFFER



## INSTRUCTIONS

# Gelish Soak-Off Gel Polish - Preparation

### Step 1

Sanitize your clients' hands and nails. Push back the eponychium and clean the nail plate of excess cuticle.

### Step 2

Shape the natural nail using a **240/240 THIN WOODEN FILE**.

### Step 3

Gently remove the shine using a **100/180 BUFFER**.

### Step 4

Cleanse nails with **NAIL SURFACE CLEANSE** and a **WIPE IT OFF** lint-free wipe.

### Step 5

Springily, apply **PH BOND** Nail Prep to the nail plate.



## INSTRUCTIONS

# Gelish Soak-Off Gel Polish - French Manicure



### Step 1

After completing your Gelish nail prep, apply a thin coat of **FOUNDATION** Base Coat Gel making sure to cap the free edge. Cure for 5 seconds in **18G LED LIGHT**.

### Step 2

Apply a thin layer of **AMBIENCE** making sure to cap the free edge. Cure for 30 seconds. Repeat for full coverage.

### Step 3

Using **ARCTIC FREEZE**, apply a thin coat to the nail tip. With a **#6 GEL BRUSH**, wipe away excess color to perfect the smile line. Cure for 30 seconds.

### Step 4

Apply a second coat of Arctic Freeze for complete coverage and cure for 30 seconds.

### Step 5

Apply **TOP IT OFF** Sealer Gel. Cure for 30 seconds.

### Step 6

Cleanse with **NAIL SURFACE CLEANSE** and a **WIPE IT OFF** lint-free wipe.

### Step 7

Massage **NOURISH** Cuticle Oil to the skin surrounding the nail plate.

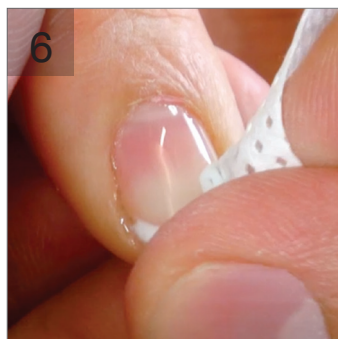
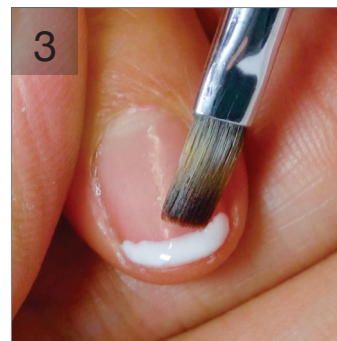
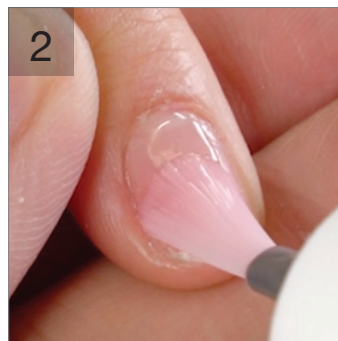


AMBIENCE

ARCTIC FREEZE

FOUNDATION  
BASE COAT GEL

TOP IT OFF  
SEALER GEL



**gelish**  
SOAK-OFF  
GEL POLISH  
gelish.com

# INSTRUCTIONS

## Bejeweled



### Step 1

After completing your Gelish nail prep, apply a thin coat of **FOUNDATION** Base Coat Gel making sure to cap the free edge. Cure for 5 seconds in **18G LED LIGHT**. Apply a thin coat of **ANIME-ZING COLOR!** making sure to cap the free edge. Cure for 30 seconds in the 18G LED Light. Repeat for full coverage.

### Step 2

With a **MINI STRIPER BRUSH** and **GIVE ME GOLD**, create two oval shapes on the nail. Cure for 30 seconds.

### Step 3

Using **POP-ARAZZI POSE** and a Mini Stripper Brush, paint two additional ovals on top of the previous ovals. Cure for 30 seconds. Apply **TOP IT OFF** to the entire nail making sure to cap the free edge. Cure for 30 seconds. With **NAIL SURFACE CLEANSE** and **WIPE IT OFF** lint-free wipes, cleanse the inhibition layer of the nail.

### Step 4

With a Mini Stripper Brush, apply **STRUCTURE BUILDING GEL** over the pink ovals to create stone shapes. Cure for 30 seconds. With Nail Surface Cleanse and Wipe It Off lint-free wipes, cleanse the inhibition layer. Using the Mini Stripper Brush and **ARCTIC FREEZE**, create the pattern design. Do not CURE. Sprinkle on **GELISH DIP** color powders and cure for 30 seconds. Dust off excess powder and enjoy your finished look.



ANIME-ZING  
COLOR!

GIVE ME GOLD

POP-ARAZZI  
POSE

ARCTIC FREEZE

**gelish**  
SOAK-OFF  
GEL POLISH  
[gelish.com](http://gelish.com)

# INSTRUCTIONS

## Butterfly Wings



### Step 1

After completing your Gelish nail prep, apply a thin coat of **FOUNDATION** Base Coat Gel making sure to cap the free edge. Cure for 5 seconds in **18G LED LIGHT**. Apply a thin coat of **AMBIENCE**. Cure for 30 seconds in the 18G LED Light. Repeat for full coverage.

### Step 2

With a **MINI STRIPER BRUSH** and **ORANGE CREAM DREAM**, create the wings of the butterfly. Cure for 30 seconds.

### Step 3

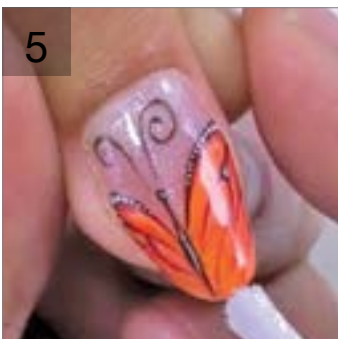
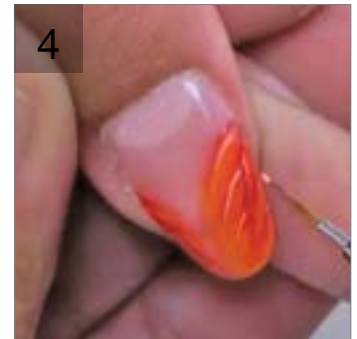
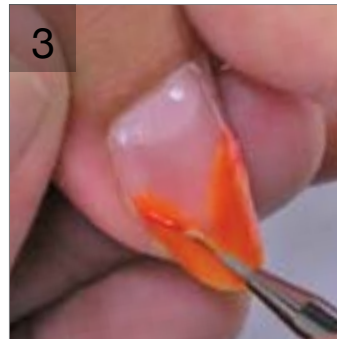
Using **TIKI TIKI LARANGA** and a Mini Striper Brush, paint outlines on the wings. Cure for 30 seconds.

### Step 4

With a Mini Striper Brush, create definition on the wings with **EXHALE** and **I'M BRIGHTER THAN YOU**. Cure for 30 seconds.

### Step 5

Using the Mini Striper Brush and **BLACK SHADOW**, outline the wings and body. Cure for 30 seconds. Apply detailing on the wings using **ARCTIC FREEZE**. Cure for 30 seconds. Apply **TOP IT OFF** to the entire nail making sure to cap the free edge. Cure for 30 seconds. With **NAIL SURFACE CLEANSE** and **WIPE IT OFF** lint-free wipes, cleanse the inhibition layer of the nail. Finish your look by massaging **NOURISH CUTICLE OIL** into the skin surrounding the nail plate. Enjoy your finished look.



AMBIENCE

ORANGE  
CREAM  
DREAM

TIKI TIKI  
LARANGA

EXHALE

I'M BRIGHTER  
THAN YOU

BLACK  
SHADOW

## INSTRUCTIONS

# Matte Striping



### Step 1

After completing your Gelish nail prep, apply a thin coat of **FOUNDATION** Base Coat Gel making sure to cap the free edge. Cure for 5 seconds in **18G LED LIGHT**. Apply a thin coat of **BELLA'S VAMPIRE** making sure to cap the free edge. Cure for 30 seconds in the 18G LED Light. Repeat for full coverage.

### Step 2

Apply a thin coat of **MATTE TOP IT OFF** to the entire nail. Cure for 30 seconds. With **NAIL SURFACE CLEANSE** and **WIPE IT OFF** lint-free wipes, cleanse the inhibition layer of the nail. With a **MINI STRIPER BRUSH**, create diagonal lines with **TOP IT OFF** Sealer Gel.

### Step 3

Continue creating diagonal lines using the Mini Striper Brush and Top It Off Sealer Gel.

### Step 4

Finish the design by creating thin diagonal lines. Cure for 30 seconds. With **NAIL SURFACE CLEANSE** and **WIPE IT OFF** lint-free wipes, cleanse the inhibition layer of the nail. Finish your look by massaging **NOURISH** Cuticle Oil into the skin surrounding the nail plate. Enjoy your finished look.

